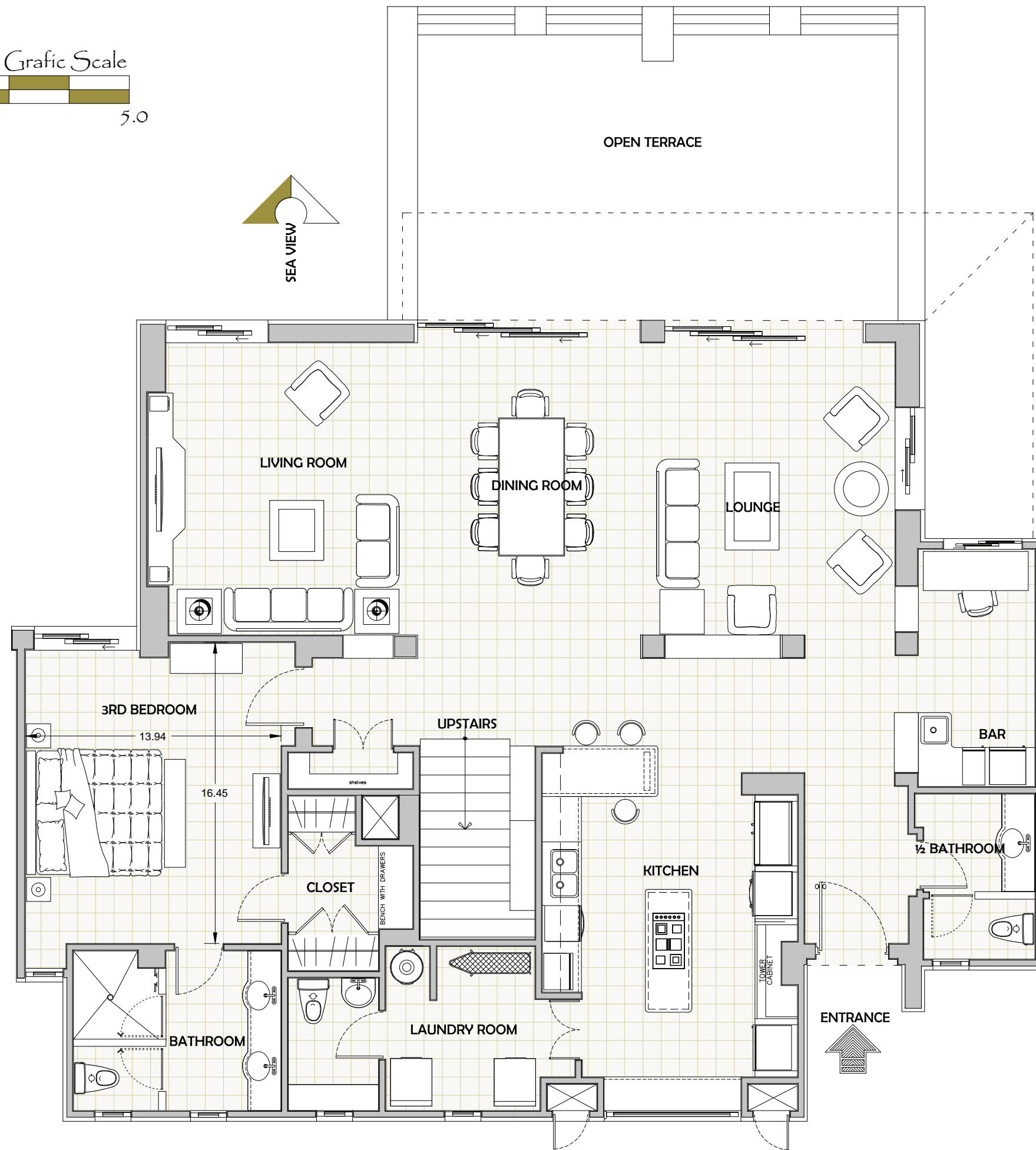
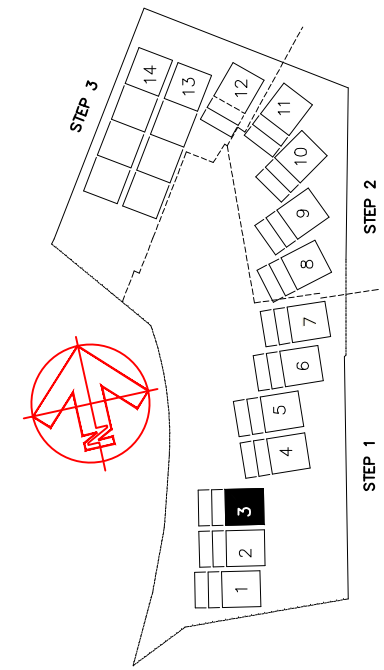


Escala Grafica / Grafic Scale  
 0 1.0 5.0



### LOCATION



### AREAS

Interior	3,631.99 sqf
Total outside Living	2,564.54 sqf
Covered Terrace	156.12 sqf
Open Terrace	2,408.42 sqf
Parking (2)	500.54 sqf
<b>Total Square Footage</b>	<b>6,697.07 sqf</b>

# PLAYA de LA PAZ

## Pent House 403

1/3 bedrooms

4th Level





